

# Does a registered sex offender want to participate in your congregation?

## Resources within the congregation



### Congregational leaders

#### Oversee and Delegate

- Appoint an Abuse Prevention and Response Team
- Adopt a protection policy if not already established
- Receive regular updates from APRT
- Continue congregation's other work

### Abuse Prevention and Response Team:

#### Guide congregational process

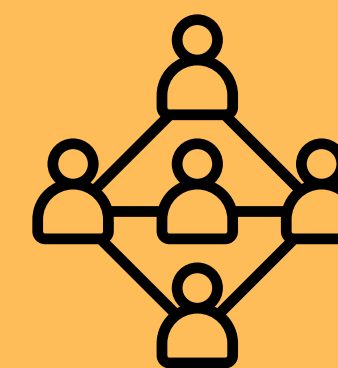
- Implement congregational policy.
- Gather information from outside resources
- Communicate with the congregation and conference.
- Create and implement a Limited Access Agreement



### Offender requesting participation

#### Trustworthy communication

- Participate in the congregational process.
- Give and receive trustworthy communication.
- Respect boundaries established by church leaders.



### Registered Sex Offender Support Team

#### Accountability and support

- Act as community for Offender during process
- Help offender maintain accountability to communication and congregational boundaries
- Help offender communicate with congregation



### Pastor(s)

#### Theological leadership and pastoral care

- Demonstrate care for the vulnerable
- Oversee care for the congregation, whether from a pastor or others.
- Be a relational and structural bridge in the congregation
- Maintain space for other congregational ministries.



### Survivors of abuse

- When they choose, speak to their experience and offer wisdom
- Receive care, as this process will be especially difficult for survivors



### Congregational care

- Seek out people needing care, especially those who have experienced abuse or misconduct.
- Serve those seeking care throughout the process.

## Resources outside the congregation



### MC USA

**Area Conference: Support pastors and congregations.** Congregations should contact their conference minister for guidance and resources.

#### MCUSA Safe Church: Resources and ministerial misconduct.

Consults on situations and policies.

MCUSA will investigate allegations of pastoral misconduct  
Denominational policies, guidance on congregational policy, educational resources



### EXPERTS

#### Mental Health Professionals: Consultation

Give insight on offender's behaviors, what could help, what should be avoided

#### Experts in sexual harm: Education

Safe Sanctuary trainings: educate volunteers on appropriate relationships and how to identify behaviors of concern.

In ministry with offender: educate on perpetrators' behavior patterns, the effects of sexualized harm on survivors, and appropriate responses to abuse.

#### Mediators: Guiding congregational conversation

In fraught or conflictual conversations, it may be necessary to engage professional facilitators.



### LEGAL

#### Law Enforcement: Criminal investigation, judicial process.

If a crime is suspected in the congregation, especially a crime against a child, contact the appropriate government agency to investigate.

#### Churches are not equipped to investigate allegations of abuse.

Parole officers may clarify the terms of a perpetrator's parole and advise the congregation on necessary limitations.